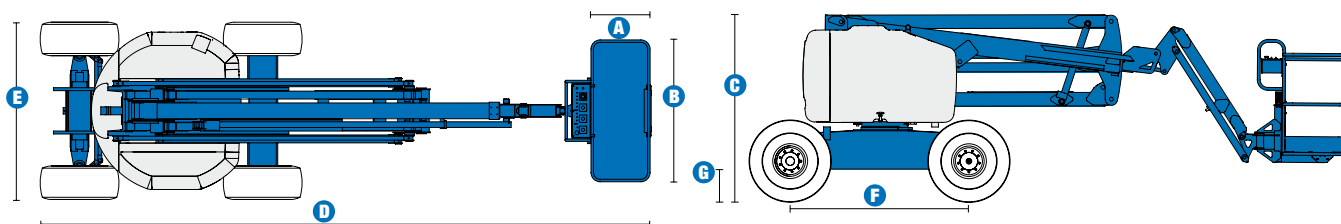
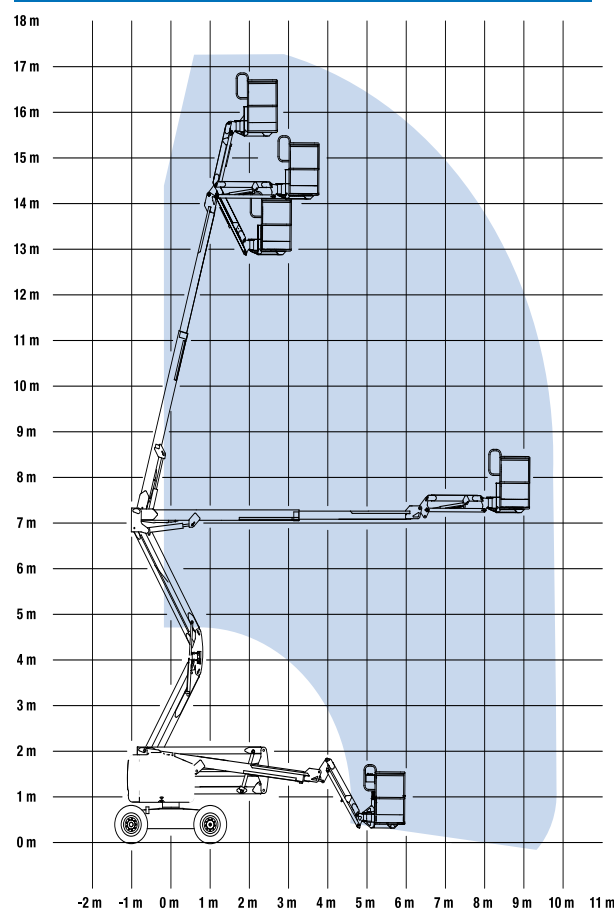


## Specifications



| MODEL                                | Z™-51/30J RT |             |
|--------------------------------------|--------------|-------------|
| MEASUREMENTS                         | Metric       | US          |
| Working height maximum*              | 17.62 m      | 57 ft 3 in  |
| Platform height maximum              | 15.62 m      | 51 ft 3 in  |
| Horizontal reach maximum             | 9.25 m       | 30 ft 4 in  |
| Up-and-over clearance at primary arm | 7.16 m       | 23 ft 6 in  |
| <b>A</b> Platform length             | 76 cm        | 2 ft 6 in   |
| <b>B</b> Platform width              | 1.83 m       | 6 ft        |
| <b>C</b> Height - stowed             | 2.16 m       | 7 ft 1 in   |
| <b>D</b> Length - stowed             | 7.50 m       | 24 ft 6 in  |
| <b>E</b> Width                       | 2.29 m       | 7 ft 6 in   |
| <b>F</b> Wheelbase                   | 2.03 m       | 6 ft 8 in   |
| <b>G</b> Ground clearance - centre   | 39 cm        | 1 ft 3.5 in |

### RANGE OF MOTION Z™-51/30J RT



| PRODUCTIVITY                   |                         |            |
|--------------------------------|-------------------------|------------|
| Lift capacity                  | 227 kg                  | 500 lbs    |
| Platform rotation              | 160°                    | 160°       |
| Vertical jib rotation          | 135°                    | 135°       |
| Turntable rotation             | 355° non-continuous     |            |
| Turntable tailswing            | zero                    | zero       |
| Drive speed - stowed           | 8 km/h                  | 5 mph      |
| Drive speed - raised**         | 1 km/h                  | 0.6 mph    |
| Gradeability - 4WD - stowed*** | 45%                     | 45%        |
| Turning radius - inside        | 1.68 m                  | 5 ft 6 in  |
| Turning radius - outside       | 4.50 m                  | 14 ft 9 in |
| Controls                       | 12 V DC proportional    |            |
| Tyres                          | 355/55 D625 foam filled |            |

| POWER                   |  |         |
|-------------------------|--|---------|
| Power source            | Deutz F3L 2011 3 cylinder diesel 48 hp (35.8 kW) |         |
| Auxiliary power unit    | 12 V DC  | 12 V DC |
| Hydraulic tank capacity | 90 L   | 24 gal  |
| Fuel tank capacity      | 64 L   | 17 gal  |

| WEIGHT**** |          |            |
|------------|----------|------------|
|            | 7,213 kg | 15,900 lbs |

**STANDARDS COMPLIANCE** CE EN280, PB-10-611-03

\* The metric equivalent of working height adds 2 m to platform height. U.S. adds 6 ft to platform height.  
 \*\* In lift mode (platform raised), the machine is designed to operate on firm, level surfaces only.  
 \*\*\* Gradeability applies to driving on slopes. See Operator's Manual for details regarding slope ratings.  
 \*\*\*\* Weight will vary depending on options and/or country standards.

## Features

### EASILY CONFIGURED TO MEET YOUR NEEDS

#### PLATFORM OPTIONS

- Steel 1.83 m (6 ft) (standard)
- Steel 1.22 m (4 ft)
- Steel 1.52 m (5 ft)

#### JIB

- 1.52 m (5 ft) jib boom

#### POWER

- Deutz Diesel F3L 2011F 48 hp (35.8 kW)

#### DRIVE

- 4x4

#### AXLE

- Active oscillating axle

#### TYRE OPTIONS

- Rough terrain foam-filled tyres (standard)
- Rough terrain non-marking foam-filled tyres

### STANDARD FEATURES

#### MEASUREMENTS

- 17.62 m (57 ft 3 in) working height
- 9.25 m (30 ft 4 in) horizontal reach
- 7.16 m (23 ft 6 in) up-and-over clearance
- Up to 227 kg (500 lb) lift capacity

#### PRODUCTIVITY

- Self-levelling platform
- Hydraulic platform rotation
- Fully proportional controls
- Drive enable system
- AC power to platform
- Horn
- Hour meter
- Tilt alarm
- 355° non-continuous turntable rotation
- Zero tailswing
- Positive traction drive
- Thumb rocker steer joystick
- Alarm package with beacon
- Certified load sensor

#### POWER

- All engines are emissions compliant
- 12 V DC auxiliary power
- Engine protection package
- Deutz intake air heater

### OPTIONS & ACCESSORIES

#### PRODUCTIVITY

- Platform swing gate
- Half mesh platform inserts with swing gate
- Platform top auxiliary rail
- Air line to platform
- Basic hostile environment kit
- Tool tray
- Fluorescent tube caddy
- Pipe cradle (pair)
- Platform work lights
- Front driving lights
- Lockable platform control box covers
- Tow package

#### POWER

- Engine gauge package
- 3000 watt AC generator (220 V/50hz)
- Diesel scrubber/spark arrestor
- Diesel spark arrestor muffler



#### UK

Millennium House  
Brunel Drive  
Newark NG24 2DE  
UK  
Tel: +44 (0)1476 584333  
Fax: +44 (0)1476 584334

#### France

10, ZA de la Croix St. Mathieu  
28320 Gallardon  
France  
Tel: +33 (0)2 37 26 09 99  
Fax: +33 (0)2 37 26 09 98

#### Germany

Finienweg 3  
28832 Achim/Bremen  
Germany  
Tel: +49 (0)4202 8852-0  
Fax: +49 (0)4202 8852-25

#### Spain

Gaià 31, Pol. Ind. Plá d'en Coll  
08110 Montcada i Reixac  
Barcelona  
Spain  
Tel: +34 93 572 50 90  
Fax: +34 93 572 50 91

#### Scandinavia

Importgatan 17  
422 46 Hisings Backa  
Sweden  
Tel: +46 31 57 51 00  
Fax: +46 31 57 90 20

#### Middle East

Terex Middle East  
PO Box 282325, Dubai  
U.A.E.  
Tel: +971 4 339 1800  
Fax: +971 4 339 1802  
Email: InfoME@terex.com

#### Genie United States

18340 NE 76th Street  
P.O. Box 97030  
Redmond, WA  
USA 98073-9730  
Tel: +1 425 881-1800  
Fax: +1 425 883-3475

**Email:** AWP-InfoEurope@terex.com

**Distributed By:**